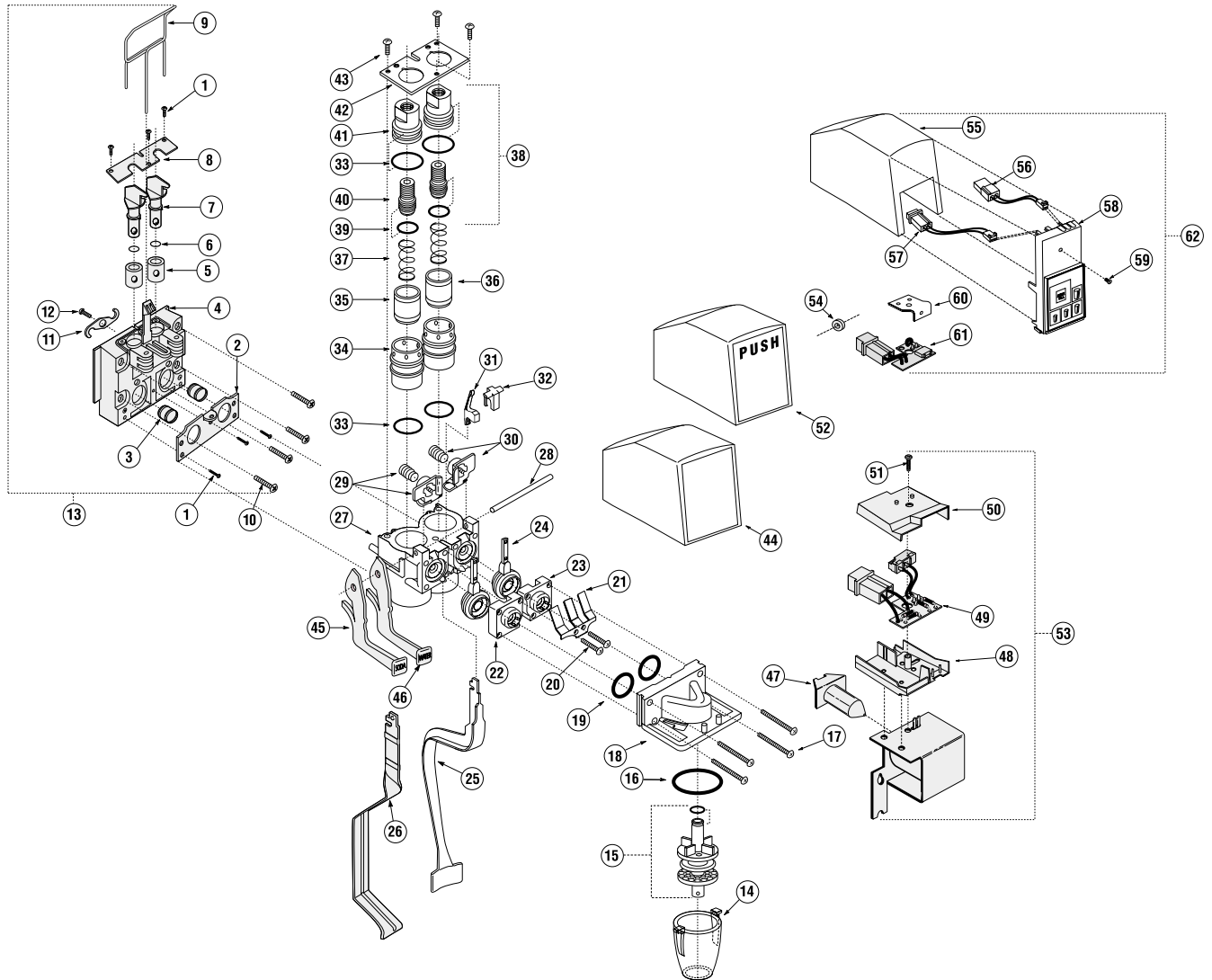





Flomatic 424 Post-mix Valve



| REF NO. | PART NO. | DESCRIPTION | REF NO. | PART NO. | DESCRIPTION | REF NO. | PART NO. | DESCRIPTION | REF NO. | PART NO. | DESCRIPTION |
|---------|----------|----------------------------------|---------|------------|---------------------------|---------|----------|--|---|----------|----------------------------------|
| 1 | 553-00 | Screw 6x7/16 PH SS | 19 | 509 | O-ring (112) | 38 | 642-00 | Brix adjustment assy complete | 57 | 817-03 | Plug assy - 3 pin/2 wire |
| 2 | 568* | SS Retainer - stem seal | 20 | 510 | Screw 4-40x5/8 SS | 39 | 551 | O-ring (012) | 58 | 832-01 | Portion control module 4-cup |
| 3 | 528 | Quad seal - stem | 21 | 511 | Spring pallet retainer | 40 | 607* | Screw - brix adjustment | 59 | 805 | Screw 6-32x5/8 SS |
| 4 | 562-80* | Mtg. block blank - 0.380" inlet | 22 | 512-01 - B | Orifice cap - left | 41 | 609* | Nut - brix adjustment | 60 | 802-01 | Portion control bracket |
| - | 562-72* | Mtg. block blank - 0.372" inlet | 23 | 513-01 - B | Orifice cap - right | 42 | 610-04 | Retainer plate (14G) | 61 | 769-P25 | Printed circuit board - pc shunt |
| 5 | 527* | Boot seal - shut off | 24 | 515 | Pallet | 43 | 611-01 | Screw 6-32x1/4 SS | 62 | P25-1500 | Portion control conversion Kit |
| 6 | 543 | O-ring (010) | 25 | 516-09 | Lever molded sanitary | 44 | 1521 | Cover - black | <small>not shown 1094 TRUCK Parts kit</small> | | |
| 7 | 526* | Plug - shut off | 26 | 516-06 | Lever SS sanitary | 45 | 1027-S | Add-a-Lever "soda" | <small>not shown 1094 STOCK Parts stock kit</small> | | |
| 8 | 567* | SS Retainer - shut off plug | 27 | 600-06-B | Flow control base | 46 | 1027-W | Add-a-Lever "water" | COMPLETE VALVE ASSEMBLIES | | |
| 9 | 538-04 | Latch pin - three point | 28 | 524-02 | Pivot pin | 47 | 9770* | Solenoid coil (not sold separately) | 424-CF-E25-1521 | | Valve - electric lever |
| 10 | 563-03 | Mounting bolt - 10-32x7/8 SS | 29 | 521-01 | Actuator assy left | 48 | 765-01* | Plunger - single coil | 424-CF-S25-1525 | | Valve - self-service |
| 11 | 564 | S-clip | - | 523 | Screw actuator adjustment | 49 | 769-U25 | Base - convertible switch hsg | 424-CF-P25-1500 | | Valve - portion control |
| 12 | 565-02 | Screw - 8x1/2 PH SS | 30 | 522-01 | Actuator assy right | 50 | 766-01* | Printed circuit board - switch assy | <i>Inquire about other 424 options.</i> | | |
| 13 | 372-Q | Complete assembly - 0.372" inlet | 31 | 517-04 | Retainer cap electric | 51 | 2611 | Cover - convertible switch hsg | <i>*Parts not sold separately</i> | | |
| - | 380-Q | Complete assembly - 0.380" inlet | 32 | 517-00 | Retainer cap manual | 52 | 1525 | Screw 6-32x5/8 SS |  | | |
| 14 | 501-24 | Nozzle clear | 33 | 608 | O-ring (017) | 53 | 770-E25 | Solenoid assy complete |  | | |
| 15 | 504-10 | Diffuser assy w/ o-ring | 34 | 602-02 | Cylinder - ceramic | 54 | 804 | Bushing actuator spacer (for non-lever valves) |  | | |
| - | 543 | O-ring (010) | 35 | 604-02 | Piston - soda | 55 | 1500 | Cover portion control | | | |
| 16 | 500 | O-ring (021) | 36 | 603-02 | Piston - syrup | 56 | 817-02 | Plug assy - 2 pin/2 wire | | | |
| 17 | 505 | Screw 4-40x1 SS | 37 | 605-01 | Spring - brix adjustment | | | | | | |
| 18 | 507-26-B | Diffuser block | | | | | | | | | |